



9080-Ex Intrinsically Safe Smart Vibration Meter Analyses, Interprets and TRENDS readings...

BENEFITS

- Find machine faults before they stop your machine
- Increase productivity and lower maintenance costs

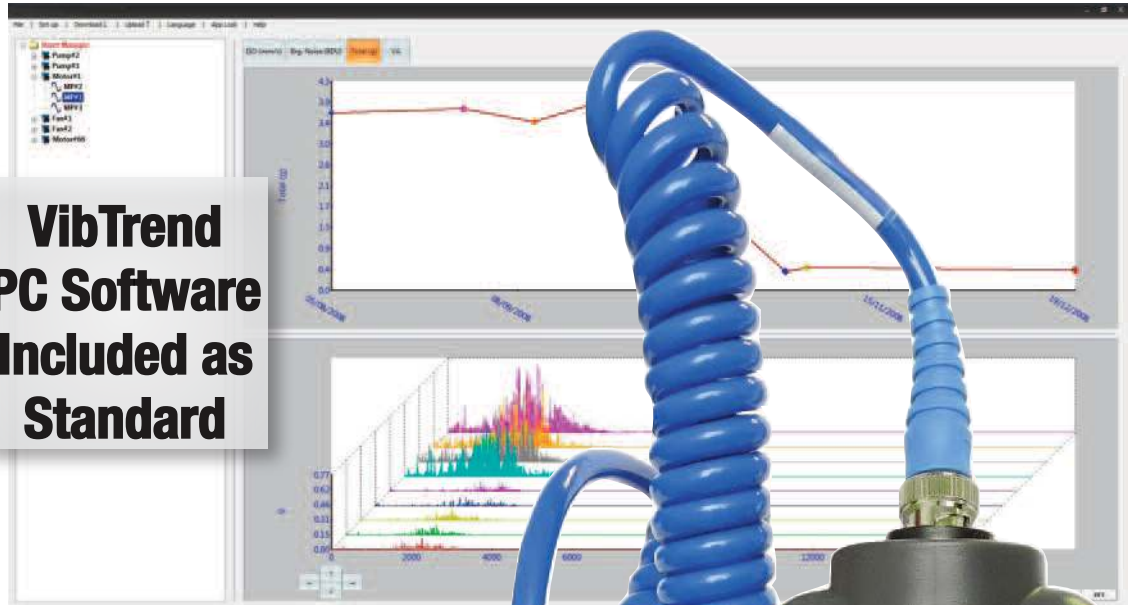
FEATURES

- Collect data
- Trend data using VibTrend software
- Intrinsically Safe cable mounted accelerometer with magnet
- Built-in Bluetooth communication capability
- USB docking station to download to a PC
- ISO built-in Alarms
- Easily identify bearing problems with BDU Reading
- Easily identify problems with built-in band filters:
 - 1X (unbalance)
 - 2X (misalignment)
 - 3X (looseness)
- 800 line FFT (spectrum)
- Ruggedized IP67 case
- 1-year Limited Warranty

PUT THE TPI
9080-Ex
TO WORK:

Commercial &
Industrial HVAC
Food Processing
Manufacturing
Mining
Packaging
Petrochemical
Pulp and Paper
Power Plants
Utilities
Automotive

**VibTrend
PC Software
Included as
Standard**



Intrinsically Safe
IEC Ex/ATEX

Ex ib IIC T4 Gb
(-20°C ≤ Ta ≤ +40°C)

**Identify the vibration
problem: unbalance,
misalignment or
looseness; in addition to
the bearing condition**

Intrinsically Safe

Certificate Numbers: IECEx BAS 16.0131X Baseefa 16ATEX0182X



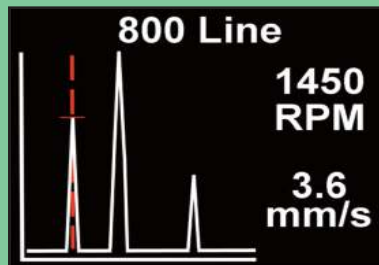


9080-Ex Intrinsically Safe Smart Vibration Meter

VibTrend standard software gives you greater ease of use and flexibility. Windows 10™ compatible

- Store analyse and report on all your vibration parameters in one place; unlimited assets with 10 readings per asset with A9084 VibTrend Pro software supplied as standard
- All information is just a click away. Color coded alarms highlight problems. Trend lines show problems before they happen.

Overall machine and bearing conditions: vibration values are displayed with color coded alarm levels for ISO values and Bearing Damage (BDU).

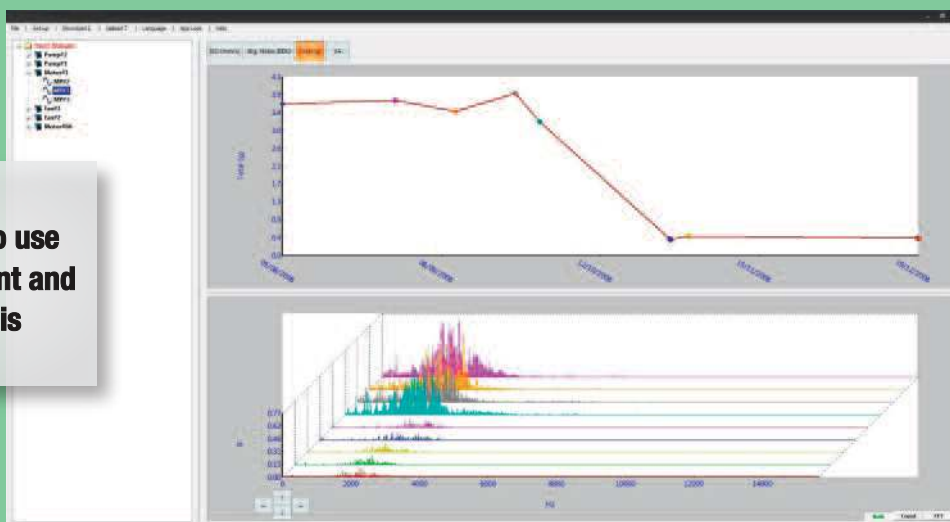


800-line spectrum with zoom and cursor.

- **Size:** H 202mm (7.95") W 60 mm (2.36")
- **Weight:** 280g (9.8oz)
- **Environmental:**
 - ❖ **Water:** IP67 Waterproof
 - ❖ **Operating:** (-20°C ≤ Ta ≤ +40°C)
 - ❖ **Storage:** -20°C to 70°C (-4°F to 158°F)
- **Power supply:** 2xAA batteries (Energizer L91)
- **Battery life:** 2-years standby, 1,500 measurements or approximately 50 hours of normal use
- **Frequency ranges:** ISO: 2/10Hz - 1kHz
g: 2Hz - 10kHz
- **Frequency resolution:** 100 / 800 lines
- **Displayed amplitude units:** Acceleration in g / velocity in inches per second or mm per second / Bearing damage in BDU
- **Displayed frequency units:** Hz, CPM or RPM
- **Input range:** +/- 60 g
- **Dynamic range:** 96 dB
- **Auto set up of VA bands**
- **Accelerometer connection:** BNC connector cable with removable magnet (1mV/g - 10,000mV/g)
- **Communication:** Bluetooth or USB docking station and cable to PC; data integration using VibTrend software
- **Reading storage:** unlimited assets/10 readings per asset with A9084 VibTrend Pro software as standard
- **Standard accessories:** A9093 Intrinsically Safe accelerometer and magnet, A9081 docking station with USB cable, A9083 VibTrend Standard software and carrying case.

The 9080-Ex can be used with non-intrinsically safe accessories in non-hazardous areas. Only the 9080-Ex and A9093 intrinsically safe accelerometer should be taken into hazardous areas.

VibTrend powerful easy to use asset management and fault diagnosis software



The Vib Meter 9080-Ex and VibTrend is the latest easy to use high specification maintenance tool offering high level functionality and capability at extremely low cost.